



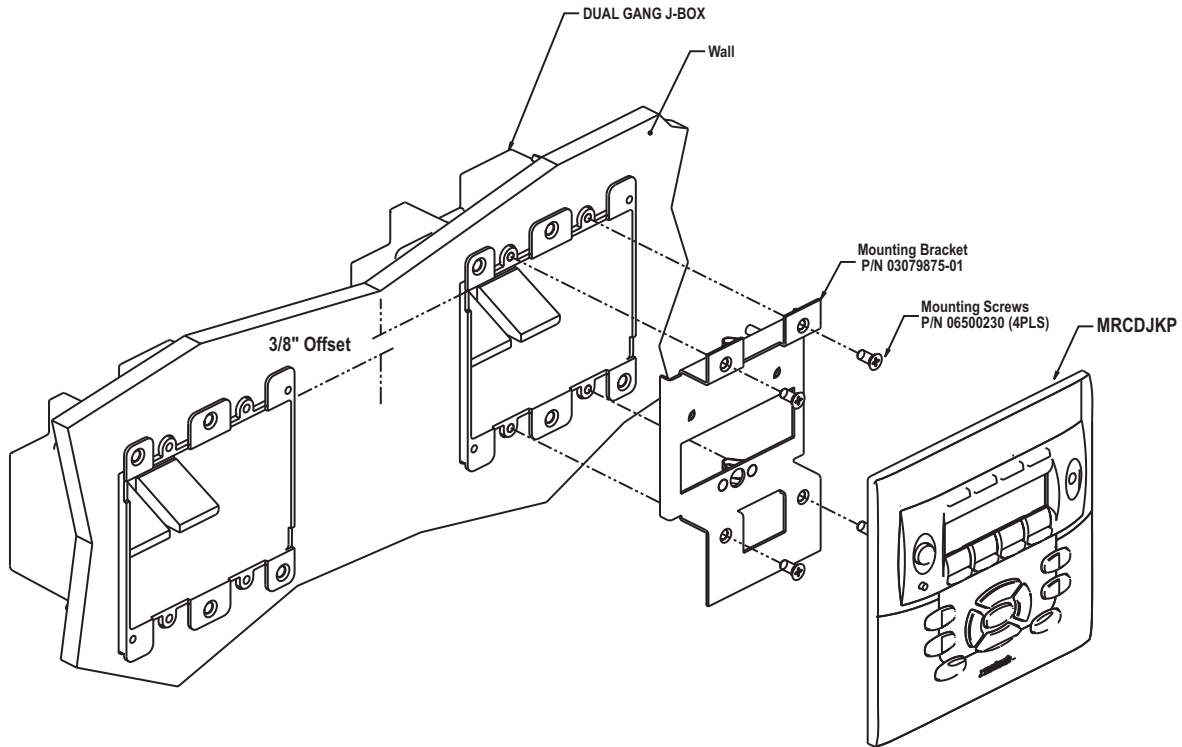
**MRC44DJKP Keypad**



**MRC88DJKP Keypad**

**Installation Instructions:**

1. Install standard Dual-Gang J-Box or similar into wall. **Note:** When installing Keypad next to existing J-Box in wall, LCKP J-Box must be mounted 3/8" higher than any adjacent box.
2. Affix MRCDJKP Mounting bracket (P/N 03079875-01) to the Dual Gang J-Box as shown in Figure 1 above using four 8-32 screws (included).
3. With the Controller/Amplifier turned off, connect the RJ45 terminated cable from MRC/MRA Controller to port labeled CONTROLLER on rear of MRCDJ Keypad. (Note: If using a Secondary Keypad in the Zone, connect another RJ45 terminated cable to the port labeled Expansion on the rear of the keypad). See MRC/MRA Controller/Amplifier manual for proper CAT5/RJ45 Termination.
4. Add or remove jumpers according to the MRC Controller/Amplifier Instruction Manual
5. Firmly snap the MRCDJ Keypad into the bracket.



**Figure MRCDJ Keypad Mounting Diagram**